

Closed wound drainage system



Drains, reservoirs, trocars and kits



**Quality
products
for better
outcomes**

About Medline

We're a global healthcare company dedicated to being easy to partner with, solving problems, and providing good value. In Australia, from our network of warehouses nationally, we manufacture and distribute an expansive portfolio of products for hospitals, healthcare facilities, aged care, and the community.

Since being established in 2011 we've put customers first. But our origins date back to 1910 in Chicago when Medline manufactured butcher's aprons, and soon after, surgical gowns. And the rest is history. So, with Medline you get a local team that understand you, backed by a global healthcare company that's been doing it for generations.

Together, advancing healthcare.

Table of contents

Medline silicone closed drain system.....	3
Wound drain range.....	4
Exuflow silicone wound drains.....	5
Perforated silicone wound drains.....	6
Medline silicone reservoir.....	7



Medline silicone closed drain system

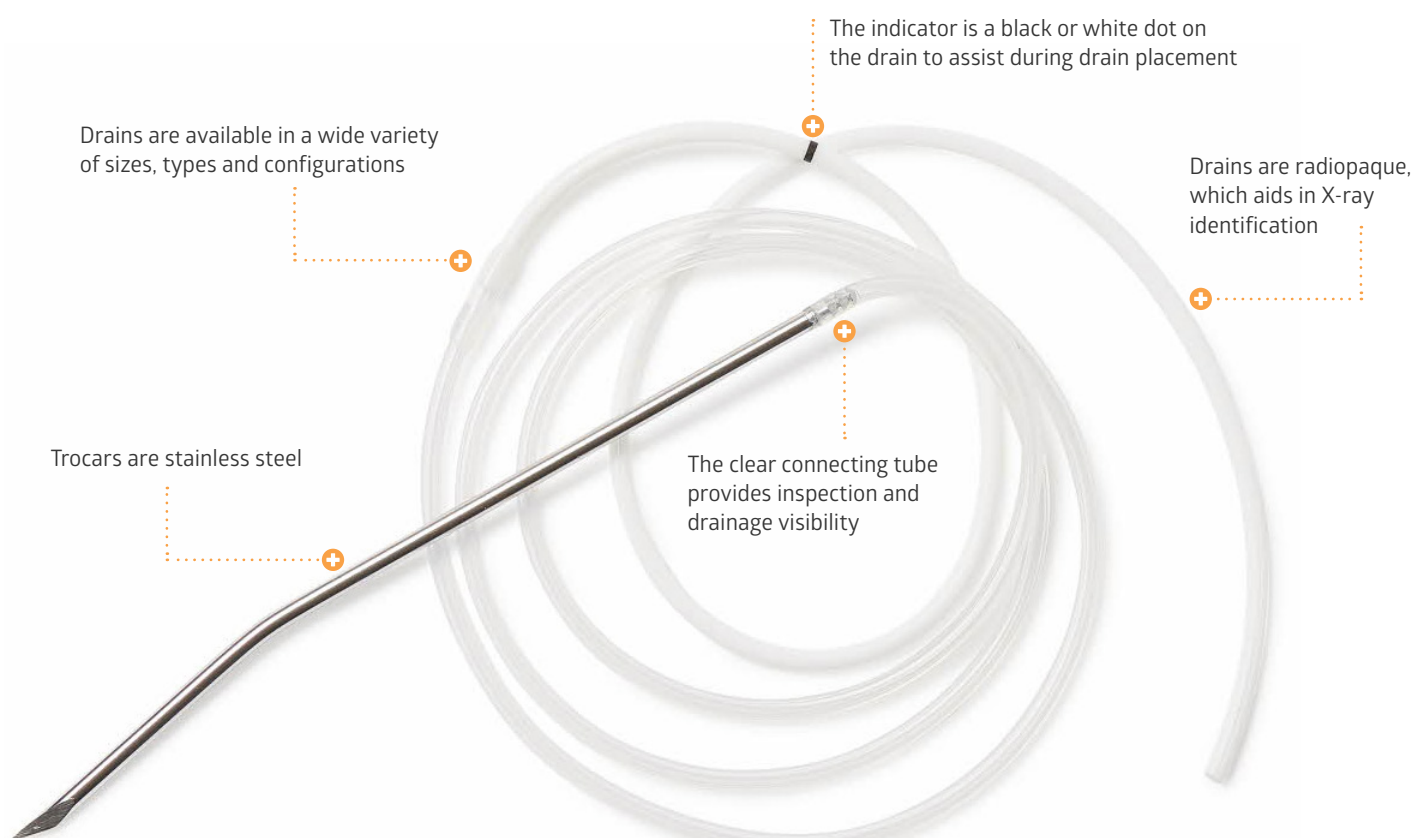


A **drain** is a tube that provides a pathway for unnecessary bodily fluids or air to flow out of the body from a wound. The purpose of the drain is to remove exudate from a surgical site to aid in the healing process.

A **closed wound drainage** system helps to prevent environmental contaminants from entering a surgical site that is being drained. In this system, internal drain tubing connects to a fluid collection reservoir which utilises low negative pressure to draw bodily fluid out of the wound incision via the drain.

Silicone provides biocompatibility and delivers low tissue responses to the wound, which minimises tissue trauma and optimises patient comfort.

All of Medline's closed wound draining systems are **single use sterile** latex-free products.



Wound drain range

Medline offers a range of closed wound drainage products and systems for the collection and measurement of exudate.

Drain

The tube through which exudate flows. There are two main types: ExuFlow and Perforated.

ExuFlow Wound Drain

- Designed with multiple portals and lumens to create alternative routes around obstructions and efficiently remove exudate
- Round or Flat drain shape
- Available with or without a trocar
- For closed wound systems

Perforated Wound Drain

- Traditional style drain with soft, kink-resistant structure to help minimise clogging for effective exudate drainage
- Round or Flat drain shape
- Available with or without a trocar
- For closed wound systems



DYNJWE1323A



ExuFlow Round



ExuFlow Flat



Perforated Round



Perforated Flat

Bulb reservoir

This is the device into which the exudate drains.

- Anti-reflux valve prevents backflow of the exudate
- Clearly marked graduation increments
- Loop and clip for attachment
- Latex free, silicone, sterile



DYNJWE1000



DYNJWE1305

Trocar

The trocar is a 3-facet surgically sharp introducer which is securely connected to the wound drain and used to insert the surgical wound. Once the wound drain is positioned, the trocar is removed and the wound drain is connected to the reservoir.

Medline wound drainage products are available single sterile and in a combination of kits:

- Wound drain and reservoir kit
- Trocar, wound drain and reservoir kit

All kits in this brochure are highlighted in blue.
(see page 6)



DYNJWE1411

Exuflow silicone wound drains

- Internal portals interconnect multiple narrow ducts and internal perforation to provide optimal drainage flow for exudate and minimise occlusion
- Independent channels facilitate drainage and lower the risk of occlusion
- Indicator dot makes drain placement quick and easy
- Available in various sizes of Round and Flat drains
- Radiopaque
- Silicone
- Sterile

This design offers the following:

- Provides distribution of suction and fluid flow over the entire drain
- Offers collateral drainage by providing alternate pathways around obstructions
- Helps to minimise tissue in-growth through narrow ducts and recessed perforations located internally within the ducts
- Assists to minimise patient discomfort during drain removal

ExuFlow drains are made of soft silicone and are available in Round and Flat versions, with or without a trocar.

Item no.	Drain size	Drain material	Drain shape		Perforated	Trocar	Reservoir	Pkg
ORHUF074	7 mm	Silicone	Flat		3/4	Yes	No	10/cs
ORHUF070	7 mm	Silicone	Flat		Full	No	No	10/cs
ORHUF104	10 mm	Silicone	Flat		3/4	Yes	No	10/cs
ORHUF101	10 mm	Silicone	Flat		Full	Yes	No	10/cs
ORHUR101	10 Fr	Silicone	Round		3/4	Yes	No	10/cs
ORHUR151	15 Fr	Silicone	Round		3/4	Yes	No	10/cs
ORHUR195	19 Fr	Silicone	Round		3/4	Yes	No	10/cs
ORHUR870	10 Fr	Silicone	Round		Full	Yes	No	10/cs
ORHUR880	15 Fr	Silicone	Round		Full	No	No	10/cs
ORHUR890	15 Fr	Silicone	Round		Full	Yes	No	10/cs
ORHUR910	19 Fr	Silicone	Round		Full	Yes	No	10/cs

Perforated silicone wound drains

- Perforations are heat-polished for smooth removal
- Perforations are positioned in alternative 90 planes to optimise exudate removal
- Available in various sizes of Round and Flat drains
- Indicator dot makes drain placement quick and easy
- Radiopaque
- Silicone
- Sterile

Perforated Round Drain

- Come in a one-piece design and are hubless
- Contain two white indicators points to aid in accurate drain placement
 - »» First (one point): 5 cm after the perforated end of the drain
 - »» Second (two points): 10 cm after the perforated end of the drain



DYNJWE1323A

Perforated Flat Drain:



- Manufactured with barium sulfate for x-ray detection of drain
- Have a two-piece design with inner lumen ribbing to help prevent drain collapse and clogging and help preserve drain patency

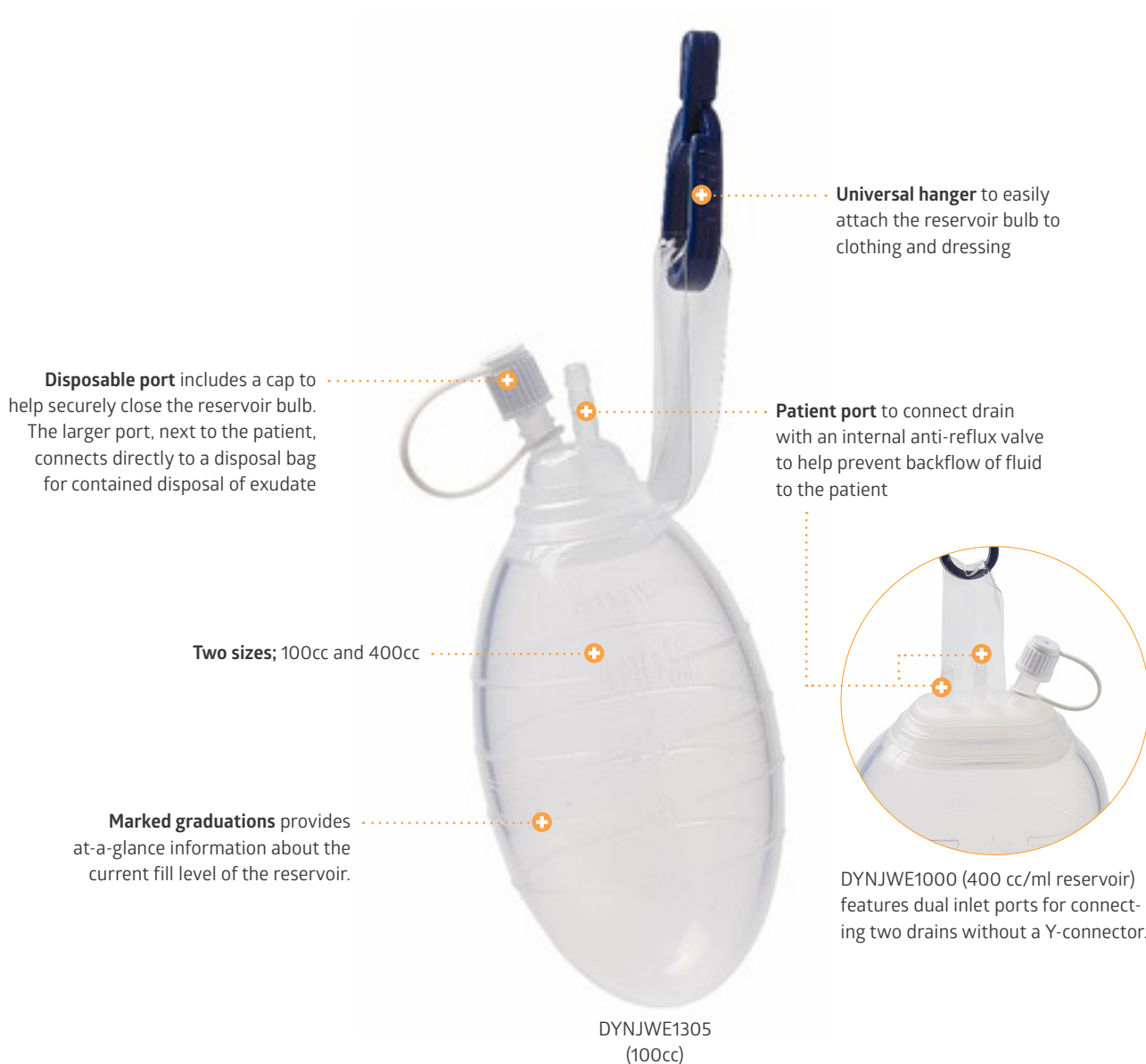
Item no.	Drain size	Drain material	Drain shape		Perforated	Trocar	Reservoir	Pkg
DYNJWE1308A	7 mm	Silicone	Perforated Flat		3/4	No	No	10/cs
DYNJWE1310	7 mm	Silicone	Perforated Flat		Full	No	No	10/cs
DYNJWE1410	7 mm	Silicone	Perforated Flat		Full	Yes	No	10/cs
DYNJWE1309	10 mm	Silicone	Perforated Flat		3/4	No	No	10/cs
DYNJWE1311	10 mm	Silicone	Perforated Flat		Full	No	No	10/cs
DYNJWE1411	10 mm	Silicone	Perforated Flat		Full	Yes	No	10/cs
DYNJWE1320	7 Fr	Silicone	Perforated Round		1/8" end	No	No	10/cs
DYNJWE1321A	10 Fr	Silicone	Perforated Round		1/8" end	No	No	10/cs
DYNJWE0321	10 Fr	Silicone	Perforated Round		1/8" end	Yes	No	10/cs
DYNJWE0323	15 Fr	Silicone	Perforated Round		1/8" end	Yes	No	10/cs
DYNJWE0325	19 Fr	Silicone	Perforated Round		1/8" end	Yes	No	10/cs
DYNJWE1360	7 mm	Silicone	Perforated Flat		Full	No	100 cc	10/cs
DYNJWE1361	10 mm	Silicone	Perforated Flat		Full	No	100 cc	10/cs

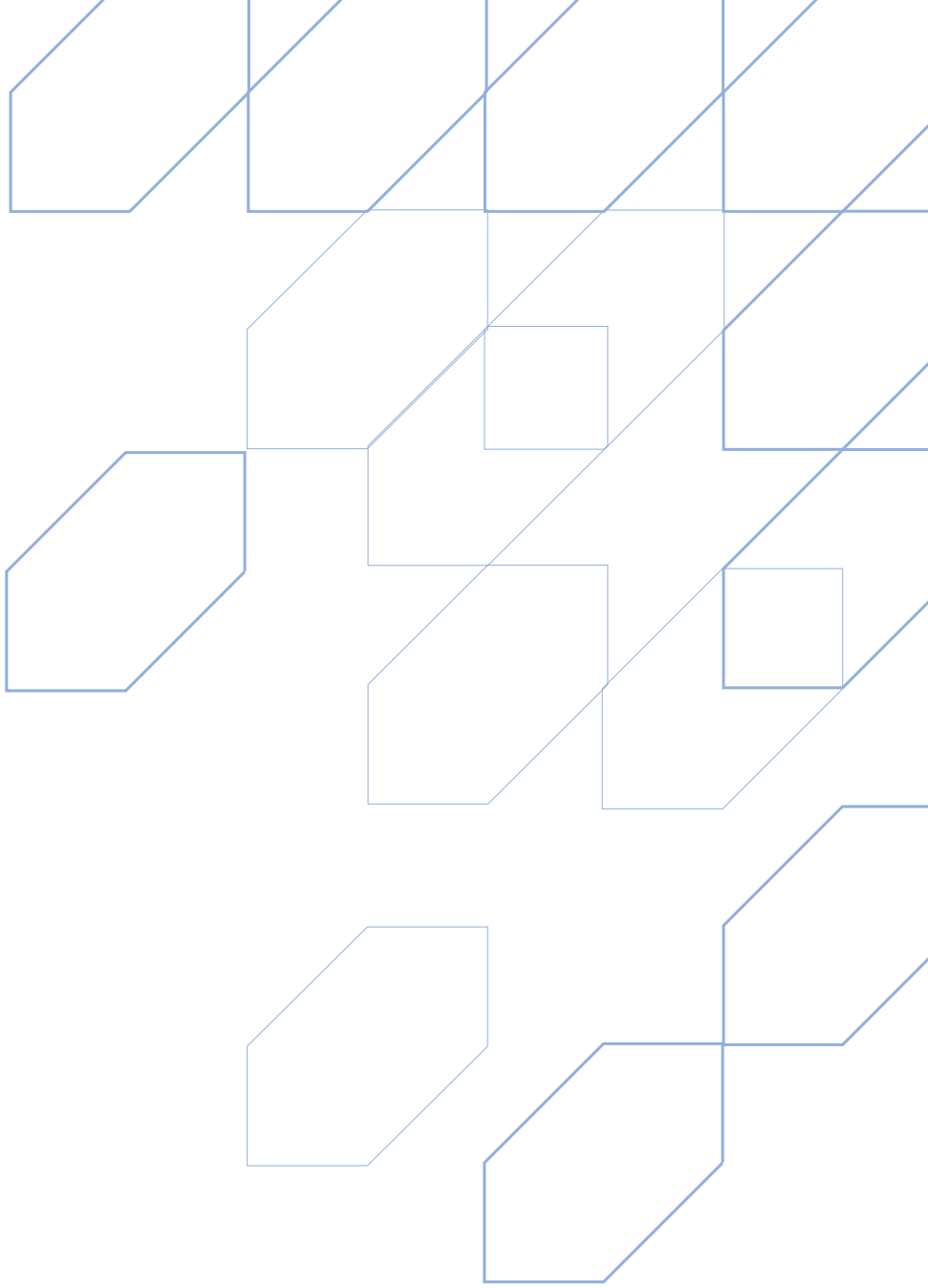
Medline silicone reservoir

Medline's reservoirs are used to collect exudate removed from the patient via surgical drains for effective post-operative recovery.

- Anti-reflux valve prevents backflow of the exudate
- Transparent reservoir bulb provides visibility of exudate levels
- Clearly marked graduation increments
- Latex Free
- Silicone
- Sterile

Item no.	Reservoir capacity		Material	Patient port	Pkg
DYNJWE1305	100 cc		Silicone	Single	10/cs
DYNJWE1000	400 cc		Silicone	Dual	10/cs





For more information, contact your Medline Account Manager or call 1800 110 511.

**Together,
advancing
healthcare**



Medline International Two Australia Pty Ltd
2 Fairview Place, Marsden Park NSW 2765
1800 110 511
medline.com.au